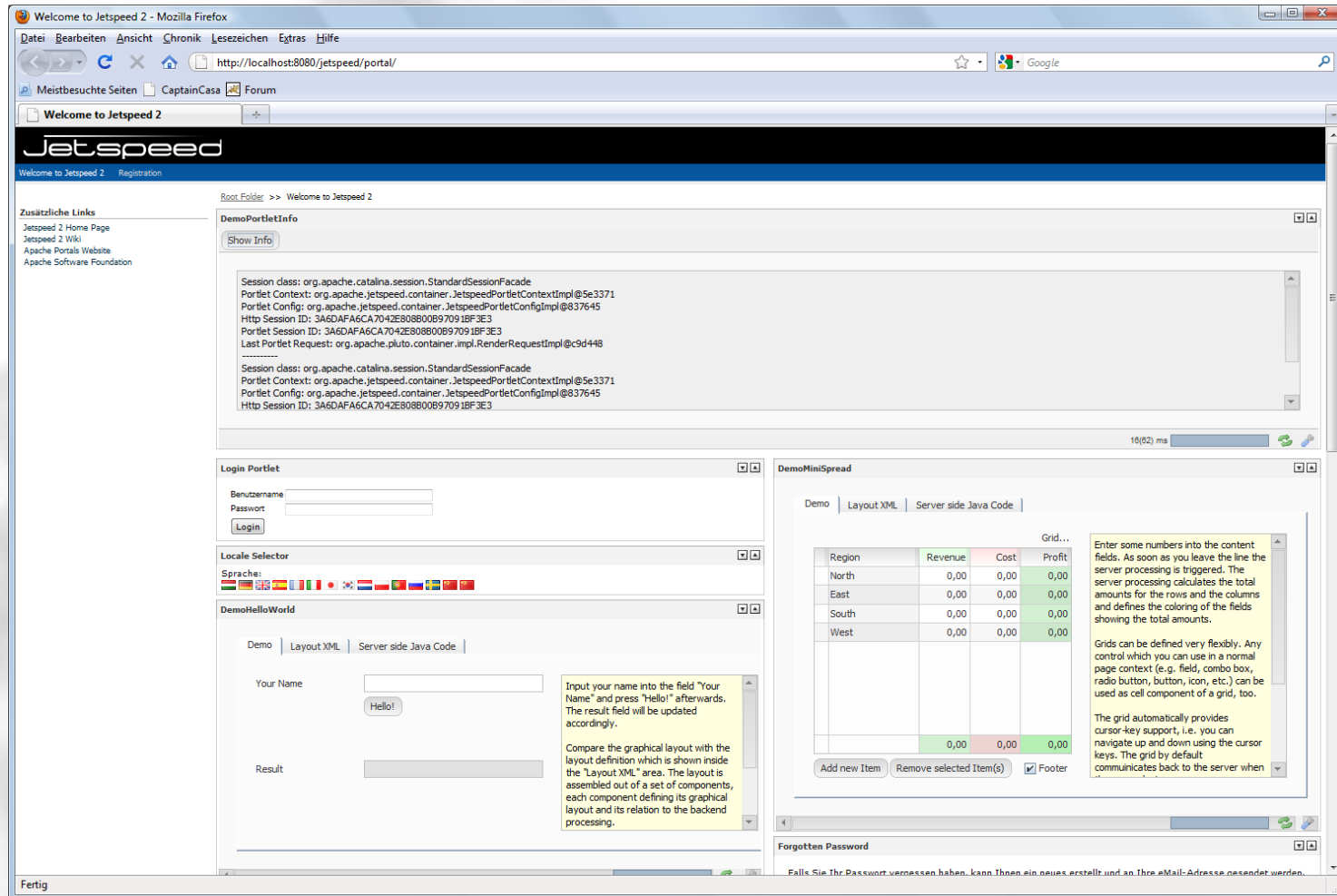


Portal Integration

Screenshot



Screenshot

Session class: org.apache.catalina.session.StandardSessionFacade
 Portlet Context: org.apache.jetspeed.container.JetspeedPortletContextImpl@633371
 Portlet Config: org.apache.jetspeed.container.JetspeedPortletConfigImpl@837645
 Http Session ID: 3A5DAFA6CA7042E808800697091BF3E3
 Portlet Session ID: 3A5DAFA6CA7042E808800697091BF3E3
 Last Portlet Request: org.apache.pluto.container.impl.RenderRequestImpl@9d498

Session class: org.apache.catalina.session.StandardSessionFacade
 Portlet Context: org.apache.jetspeed.container.JetspeedPortletContextImpl@5a3371
 Portlet Config: org.apache.jetspeed.container.JetspeedPortletConfigImpl@837645
 Http Session ID: 3A5DAFA6CA7042E808800697091BF3E3

10(62) ms

Benutzername:
 Passwort:
 Login

Sprache:

Demo | Layout XML | Server side Java Code |

Your Name:
 Hello!

Result:

Input your name into the field "Your Name" and press "Hello!" afterwards. The result field will be updated accordingly.

Compare the graphical layout with the layout definition which is shown inside the "Layout XML" area. The layout is assembled out of a set of components, each component defining its graphical layout and its relation to the backend processing.

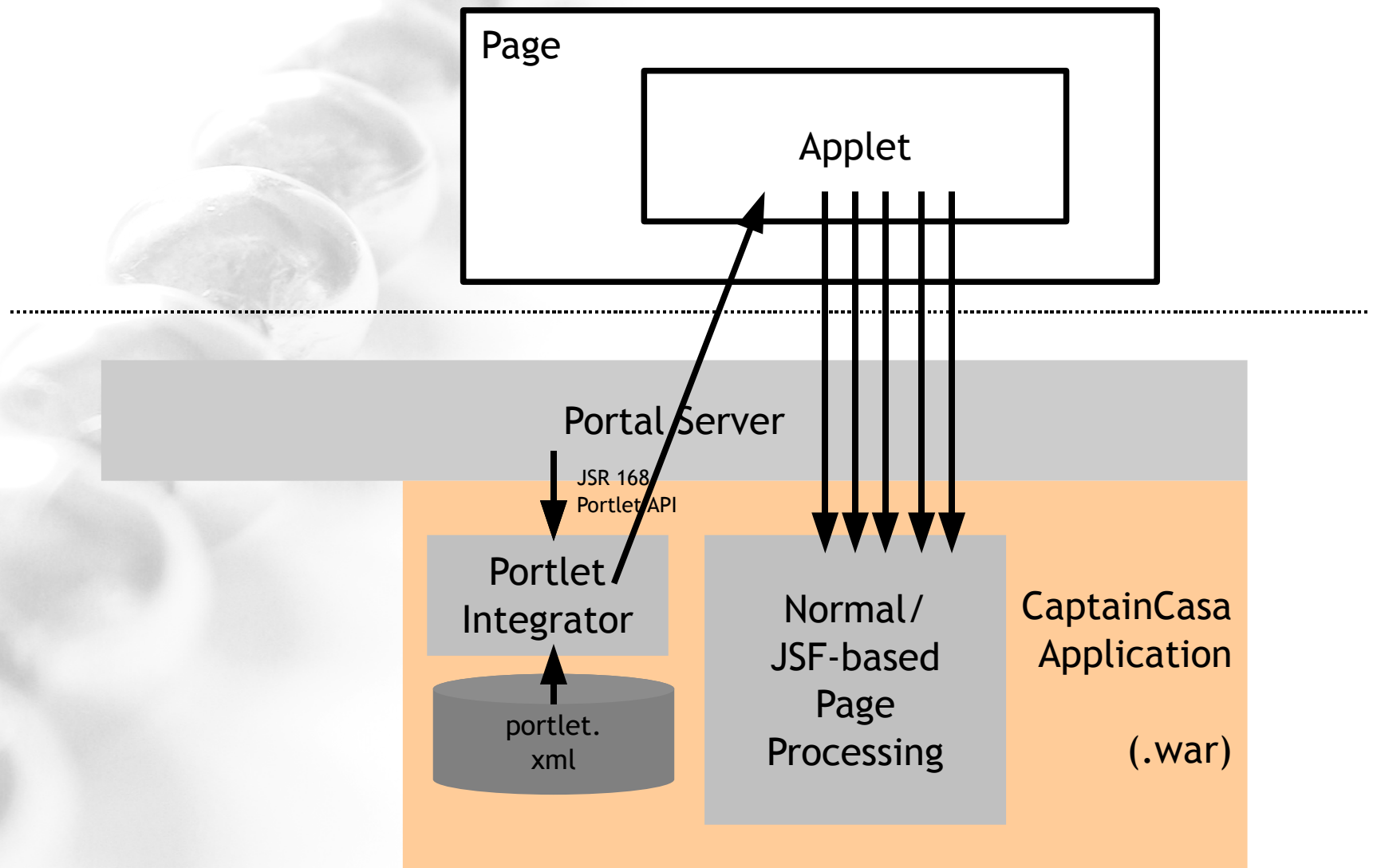
Grid...
 Enter some numbers into the content fields. As soon as you leave the line the server processing is triggered. The server processing calculates the total amounts for the rows and the columns and defines the coloring of the fields showing the total amounts.

Region	Revenue	Cost	Profit
North	0,00	0,00	0,00
East	0,00	0,00	0,00
South	0,00	0,00	0,00
West	0,00	0,00	0,00
	0,00	0,00	0,00

Add new Item Remove selected Item(s) Footer

Forgotten Password
 Falls Sie Ihr Passwort vergessen haben, kann Ihnen ein neues erstellt und an Ihre eMail-Adresse gesendet werden.

Architecture



Generic Integration

- Integration is done via generic JSR 168 portlet implementation „PortletIntegrator“
- „PortletIntegrator“ wraps a CaptainCasa page
 - Configuration by portlet.xml
 - Per portlet one definition within portlet.xml
 - Parameters (page, size) defined as preferences of portlet.xml

portlet.xml, Example

```
<portlet-app version="1.0"
             id="CC Demo Portlets">

    <portlet>
        <portlet-name>DemoPortletInfo</portlet-name>
        <display-name>DemoPortletInfo</display-name>
        <portlet-class>org.eclnt.jsfserver.portlet.PortletIntegrator</portlet-class>
        <portlet-info>
            <title>DemoPortletInfo</title>
        </portlet-info>
        <portlet-preferences>
            <preference><name>ccpage</name>
                <value>workplace.demoportletinfo.ccapplet?ccsamesession=true</value>
            </preference>
            <preference><name>normalwidth</name><value>100%</value></preference>
            <preference><name>normalheight</name><value>250</value></preference>
            <preference><name>maxwidth</name><value>100%</value></preference>
            <preference><name>maxheight</name><value>250</value></preference>
        </portlet-preferences>
    </portlet>

    ...
    ...

</portlet-app>
```

Generic
Portlet

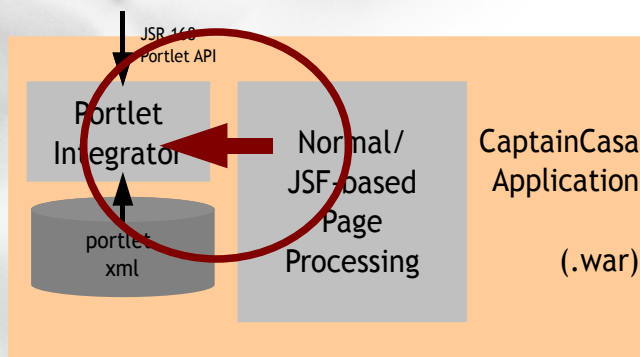
Page to be
shown

Size
Definitions

Accessing Portal API

- The Portal API can be accessed from the normal CaptainCasas server side processing via a defined interface

```
public static PortletContext getCurrentPortletContext();  
public static PortletConfig getCurrentPortletConfig();  
public static PortletRequest getCurrentPortletRequest();  
public static String getCurrentPortletSessionId();
```



JSR 168 Portal <=> Rich Content

- Rich Content == AJAX, Macromedia, Java/FX, MS Silverlight, ...
- Pay attention / be aware of:
 - Rich content is by default re-rendered with every portal page refresh
 - Re-rendering typically means a re-loading of the corresponding libraries / plug-ins