

# Working with NetBeans 6.9.1

Document version: 20101124\_0900

Please follow the steps described in this document in order to create a CaptainCasa project when using the NetBeans IDE.

Maybe there are other ways as well to create the project - so this is not the „one and only guide“. We of course are happy to receive feedback if you find some better sequence of steps!

---

## Stop your Engines!

Please make sure:

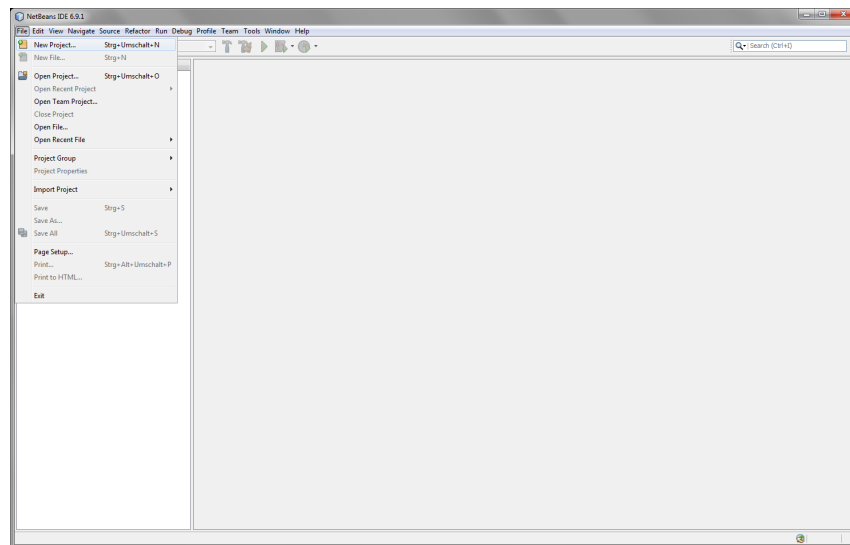
- CaptainCasa Server is NOT running
- CaptainCasa Tolls are NOT running

---

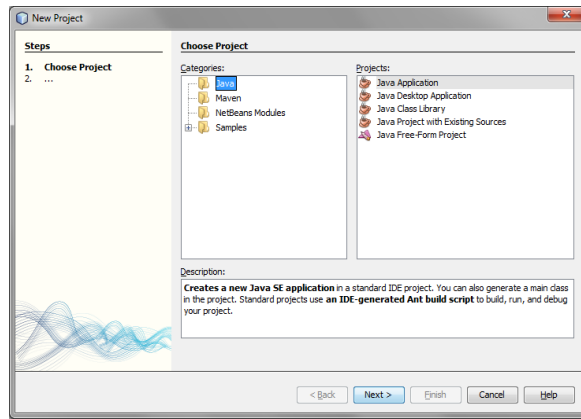
## Create the Project in NetBeans

...yes - create the project in NetBeans first! This is different to what we describe with Eclipse, but it's just simpler.

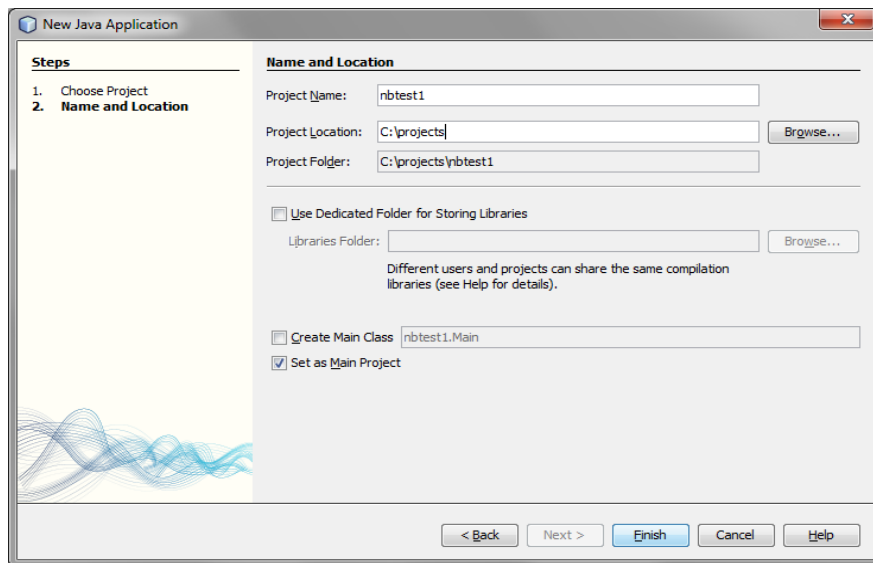
Open NetBeans - select „File - New Project...“ from the menu:



In the following dialog first define, that your project is a normal Java project:



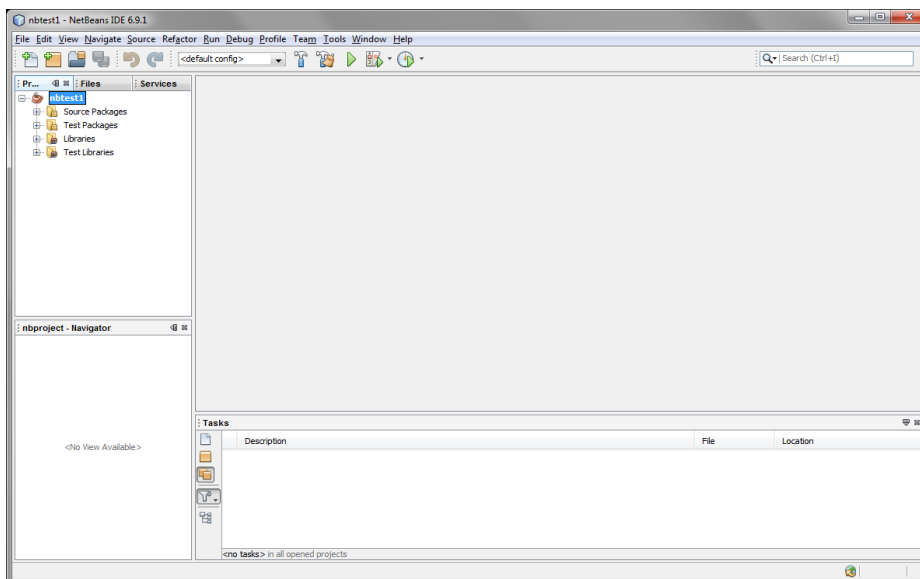
Now define the name and the location of your project:



In this example we use:

- Project Name „nbtest1“
- Location „[c:\projects](#)“, so that the project folder is „[c:\projects\nbtest1](#)“

Result: the project is created:

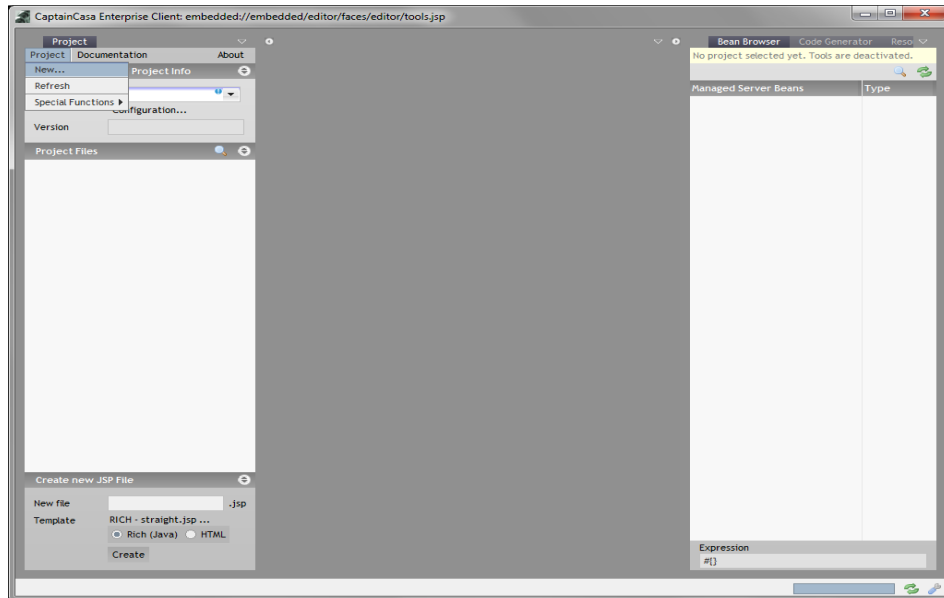


# Create the Project in the CaptainCasa Environment

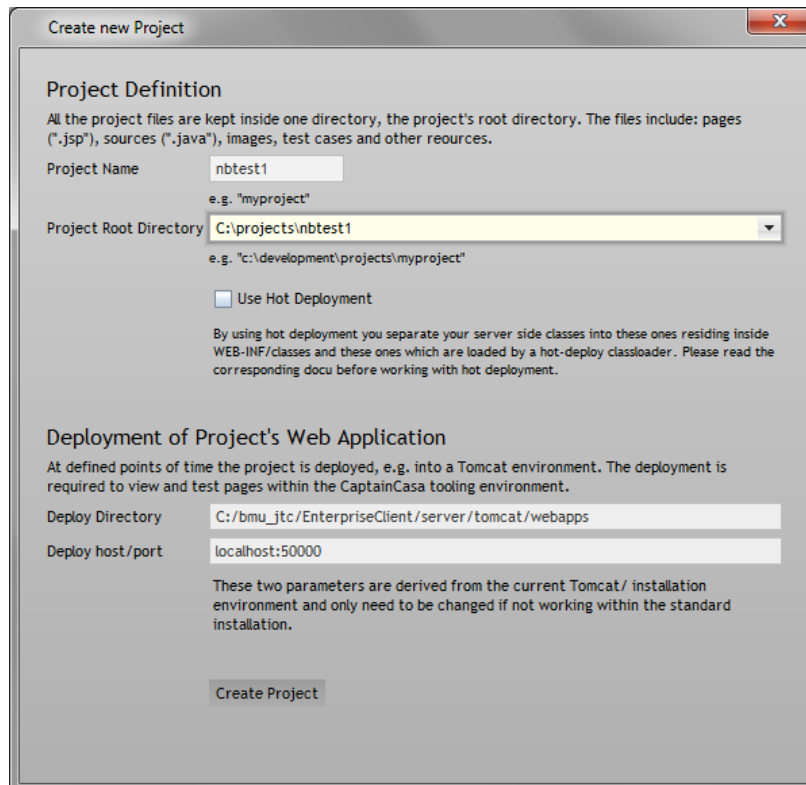
Now start the CaptainCasa tools.

- Do NOT start the CaptainCasa Server yet!

In the tools select „Project - New...“ from the menu:



Define name and root directory of the project - pointing to the directory that you just created within NetBeans:



- Project Name „nbtest1“
- Root Directory „c:\projects\nbtest1“

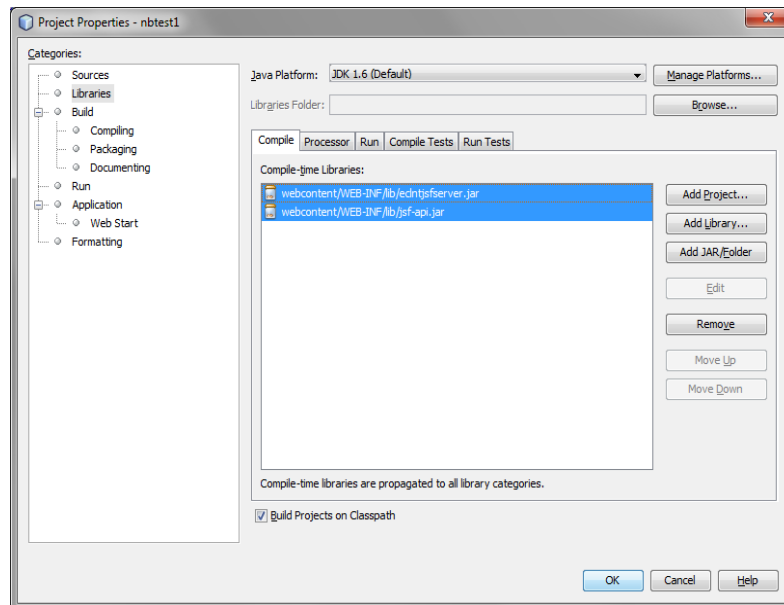
## Rightsize NetBeans Project Settings

The NetBeans project is now „injected“ with the CaptainCasa files. You now have to:

- tell NetBeans to include some libraries
- update the build-settings for the compilation of classes

### Including two Libraries

Within the project's webcontent/WEB-INF/lib folder there are the libraries that are required within the CaptainCasa runtime. Two of these libraries are required at compile time and have to be added to the project libraries.

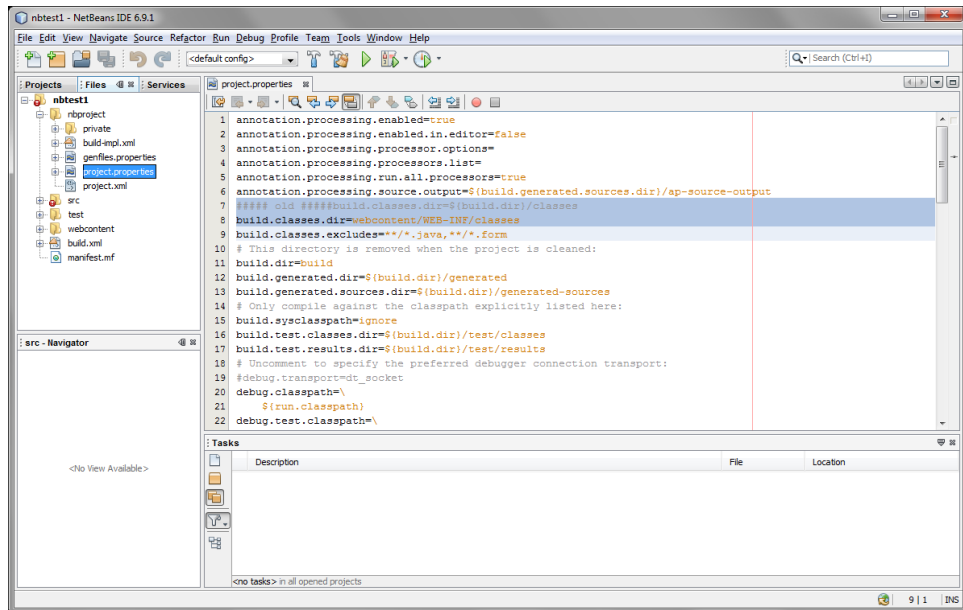


The libraries to be included are:

- webcontent/WEB-INF/lib/eclntjsfserver.jar
- webcontent/WEB-INF/lib/jsf-api.jar

### Updating the Build Path

The compiled classes of the project need to be compiled into the project's „webcontent/WEB-INF/classes“ directory. This needs to be defined within the project settings, stored in the project.properties file („nbproject\project.properties“):



Update the following line:

<pre> from: build.classes.dir=\${build.dir}/classes  into: build.classes.dir=webcontent/WEB-INF/classes </pre>
--

Now, by building the project (key F11) the sources will be compiled into this directory.

---

## Now start Working...!

You now can start the CaptainCasa Server and can start „normal working“.

---

## Please note

### Inclusion of Libraries

All libraries that you require at runtime need to be placed into the folder webcontent/WEB-INF/lib of your project.